

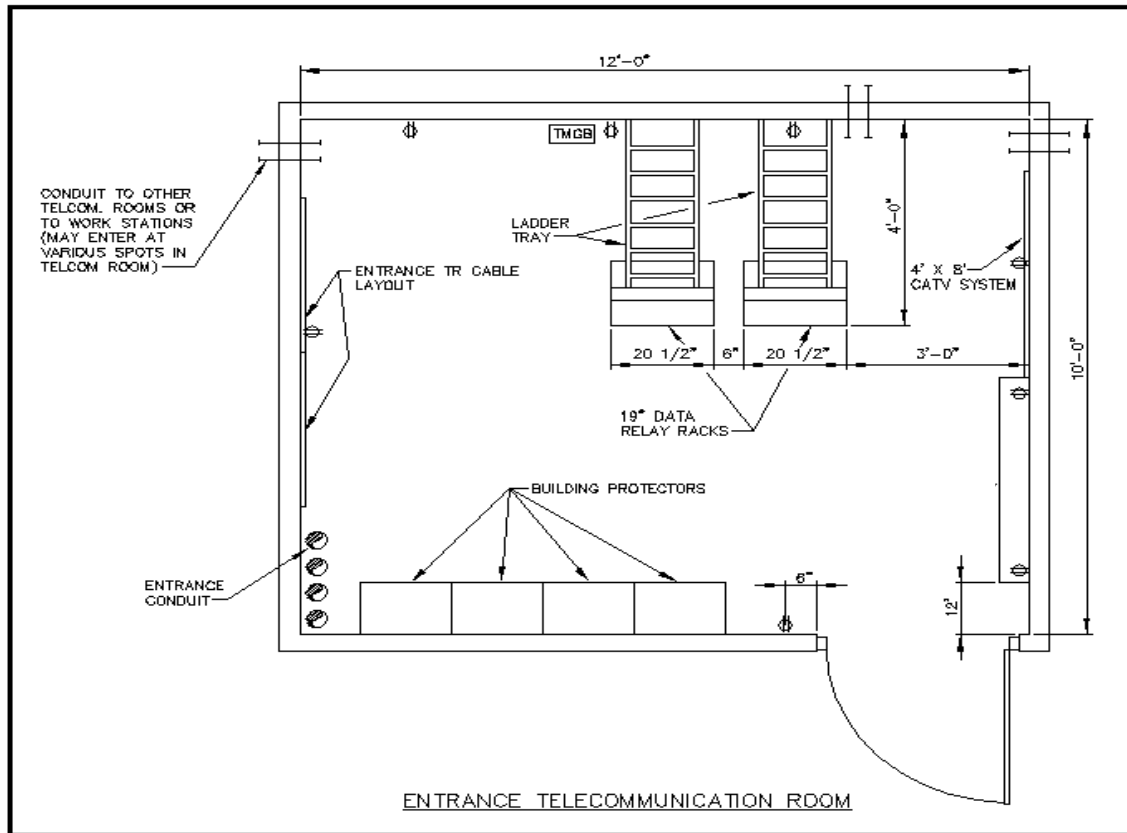


LOUISIANA STATE UNIVERSITY

## **Appendix A**

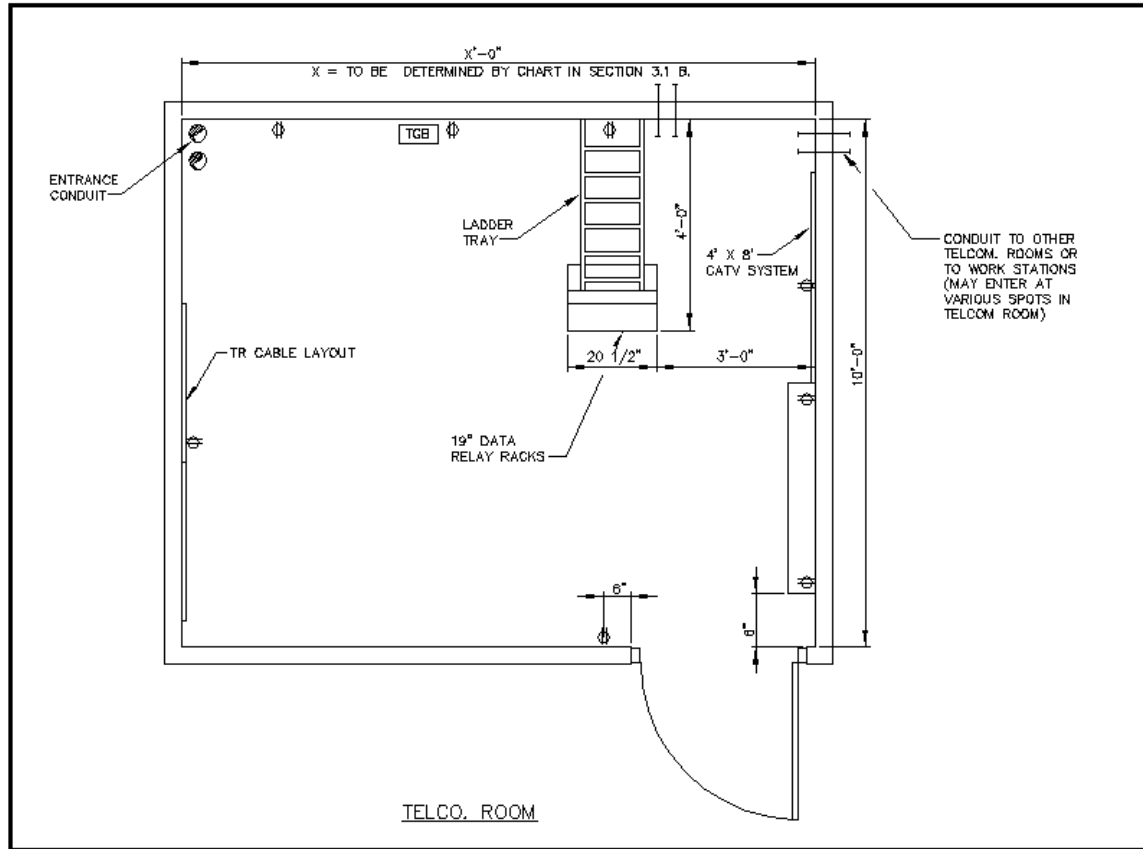
**Louisiana State University Construction Specifications**

Figure 1



Equipment racks shall be constructed of aluminum, shall be 19 inches wide, and floor mountable. All racks shall be anchored using drop in anchor bolts. Minimum floor space required shall be 12 square feet, 3' front by 4' deep per rack. The rack (or racks) will be supported from the top of the rack using a ladder type tray. The tray will be used to support the rack and also to transition the cable from the rack to the wall. **No cables will free span from the wall to the rack.**

Figure 2



Equipment racks shall be constructed of aluminum, shall be 19 inches wide, and floor mountable. All racks shall be anchored using drop in anchor bolts. Minimum floor space required shall be 12 square feet, 3' front by 4' deep per rack. The rack (or racks) will be supported from the top of the rack using a ladder type tray. The tray will be used to support the rack and also to transition the cable from the rack to the wall. **No cables will free span from the wall to the rack.**

Figure 3

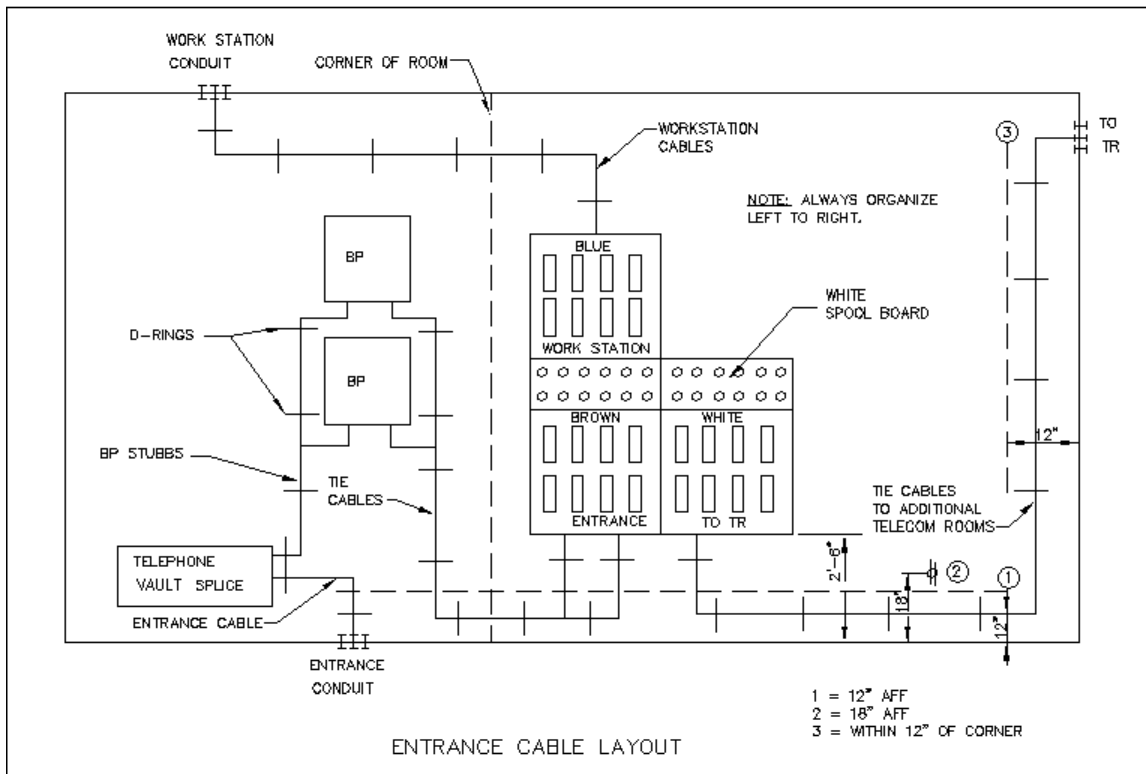


Figure Notes:

1. Keep all cables routed at floor below 12"
2. Install electrical receptacle at 18" above finished floor. Do not cover the receptacle with any obstructions. Receptacle must be in clear site.
3. Any cable that transverses the wall vertically must do so within 12" of the corner

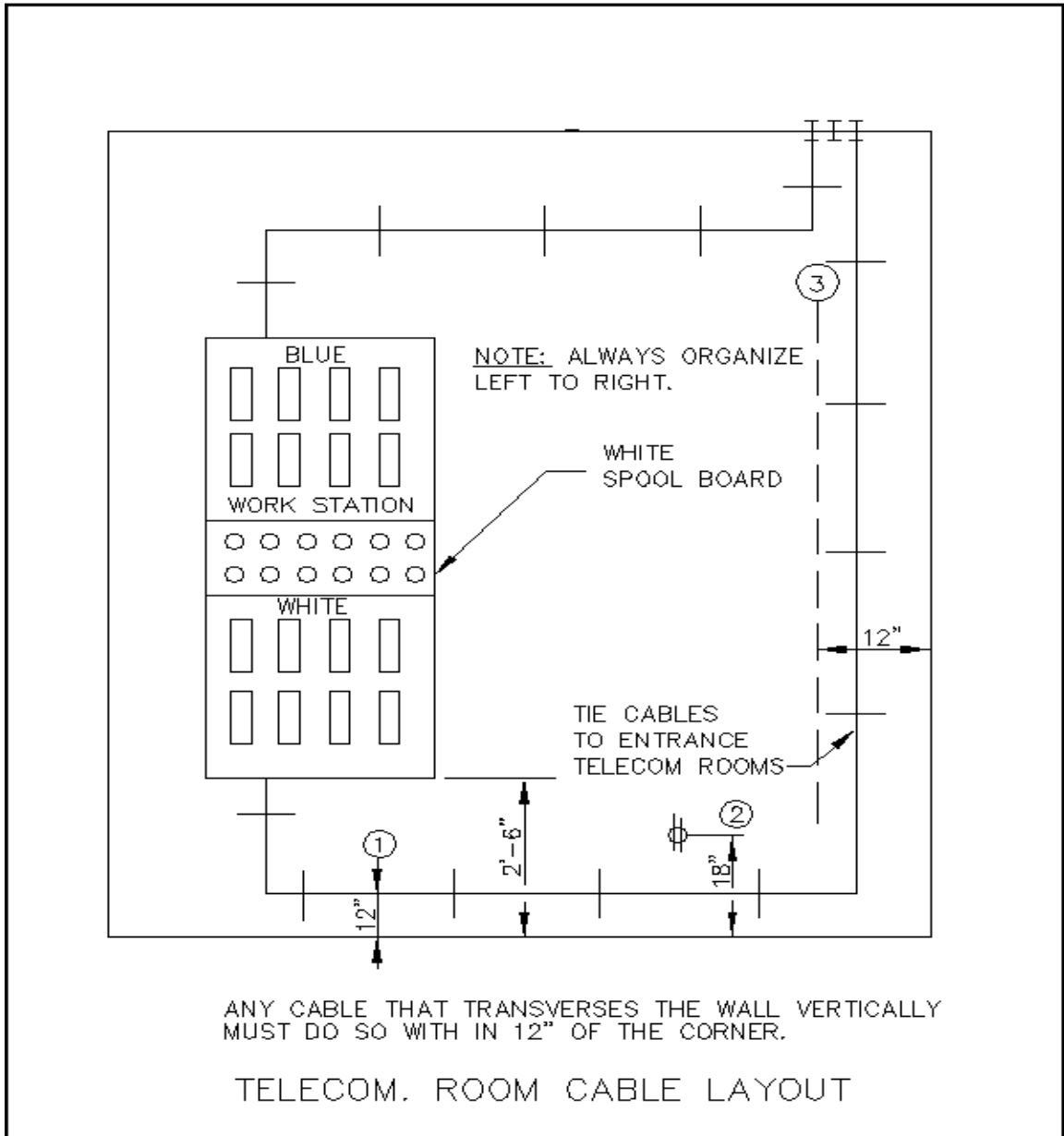


Figure 4

Figure Notes:

1. Keep all cables routed at floor below 12"

2. Install electrical receptacle at 18" above finished floor. Do not cover the receptacle with any obstructions. Receptacle must be in clear site.
3. Any cable that transverses the wall vertically must do so within 12" of the corner.

Figure 5

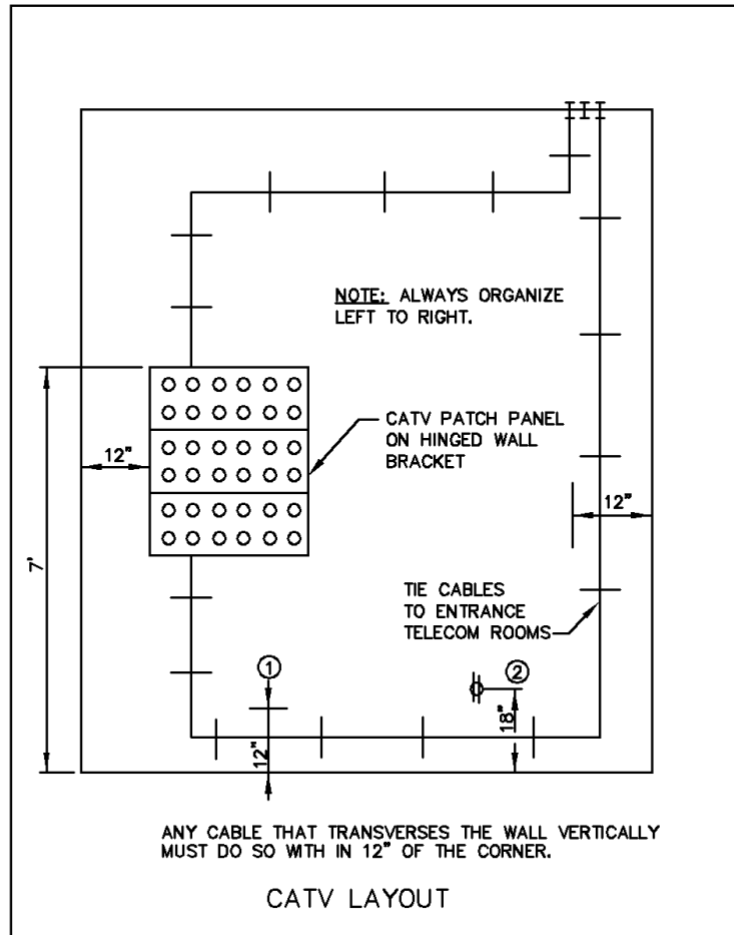


Figure Notes:

1. Keep all cables routed at floor below 12"
2. Install electrical receptacle at 18" above finished floor. Do not cover the receptacle with any obstructions. Receptacle must be in clear site.  
\*\*Any cable that transverses the wall vertically must do so within 12" of the corner

Figure 6

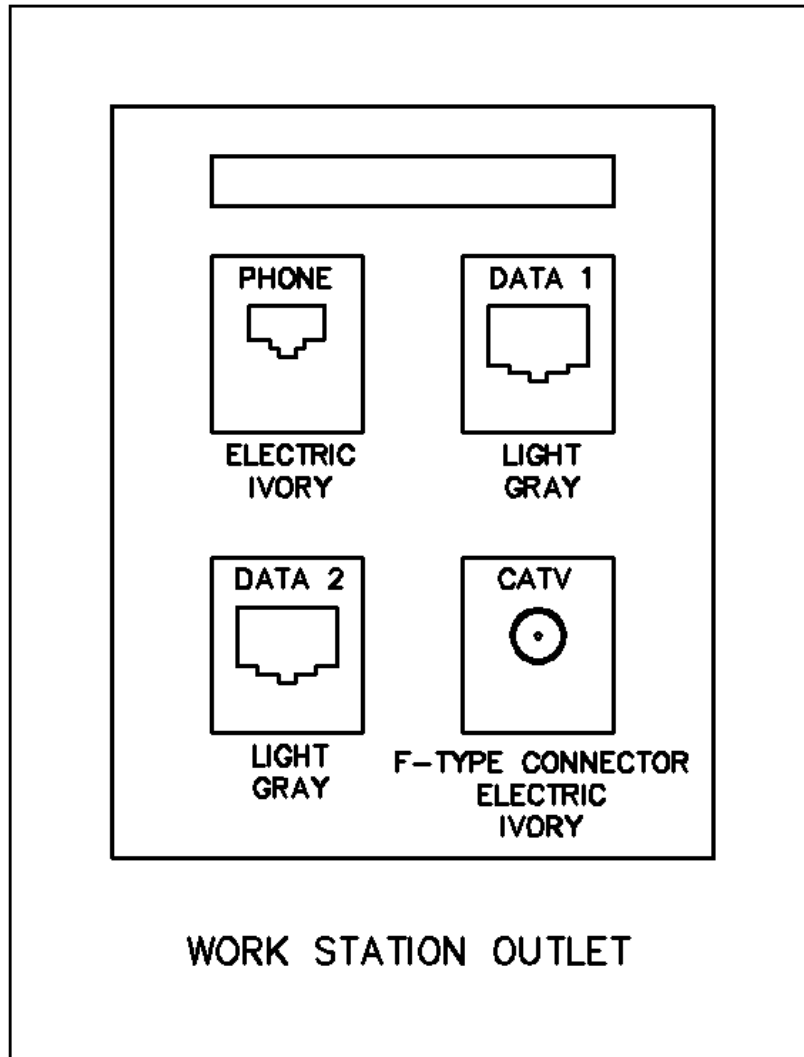
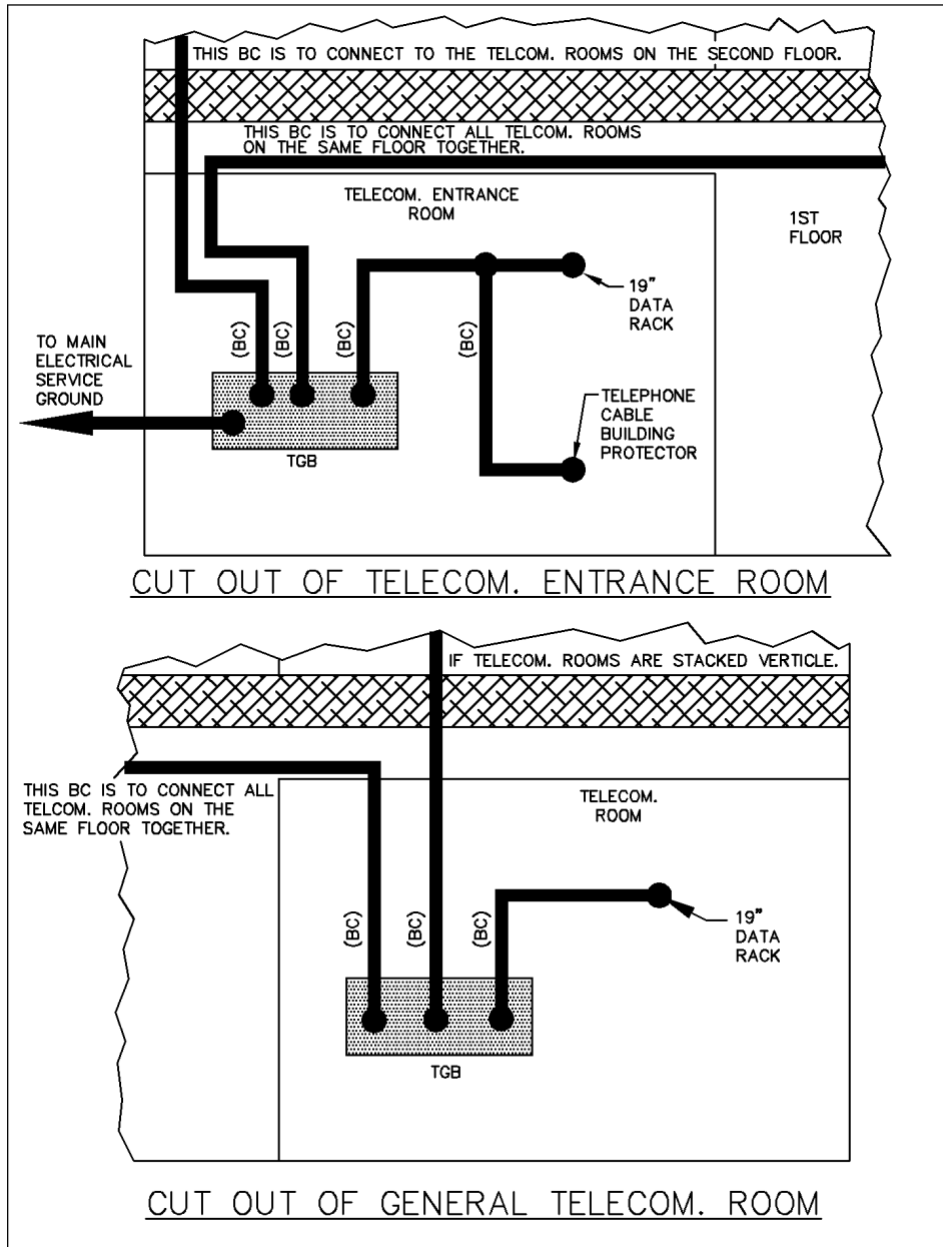


Figure 7







# **Appendix A**

## **Louisiana State University Construction Specifications**